



Technical Announcement

INDUSTRY AUTOMATION BU, DELTA ELECTRONICS, INC

| | | | | | |
|-------------------------|---|------------------|----------------|--------------------------------|---|
| Product Category | DOP-HMI | Model(s) | DOP-B Series | Security Classification | <input checked="" type="checkbox"/> General <input type="checkbox"/> Confidential <input type="checkbox"/> Top-secret |
| | | | | ECN No. | N/A |
| Issued by | HMI PSM/FAE Division | Author(s) | Daisy Huang | Issue No. | HMI15061000 |
| | | | | Released Date | 2015/06/10 |
| Recipient | HMI Product Manager, BU Sales Representative, DGC, DEU, DPR, DES, DEK, DEJ, DIN | | | | |

Abstract:

Delta is pleased to announce the immediate release of new DOPSoft version 2.00.04.09 patch for DOP series HMI. This release is an improvement, which includes new HMI model and bug fixes.

- DOP-H models after updating firmware are 3.0091.

Description:

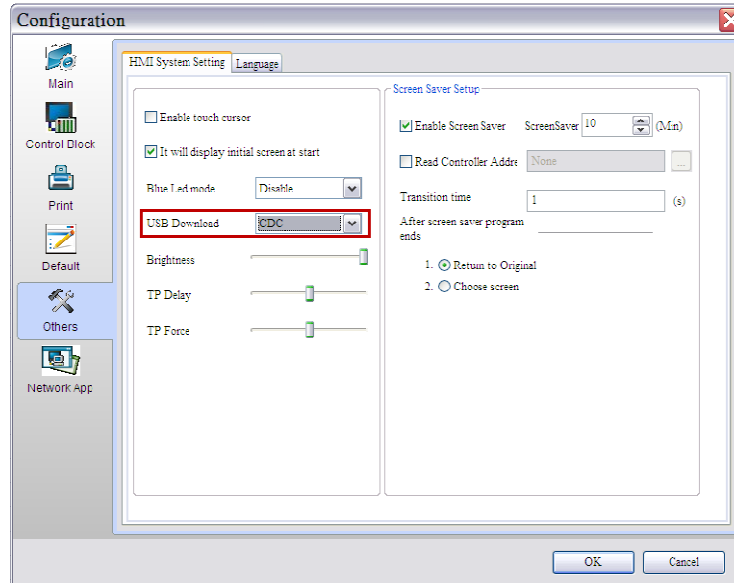
- The model(s): DOP series
- Fixes in DOPSoft version 2.00.04.09 :
 - 2.1 Fixed when upload/download HMI through CDC mode will cause error message " No Response From HMI! ".
 - 2.2 Fixed compile will show incorrect error message when address of Alarm Setting is not specified.
- Add in DOPSoft version 2.00.04.09 :
 - 3.1 Add DOP-H series HMI model: DOP-H07E460, DOP-H07S460, DOP-H07E420 and DOP-H07S420.

品質至上
信賴第一
追求卓越

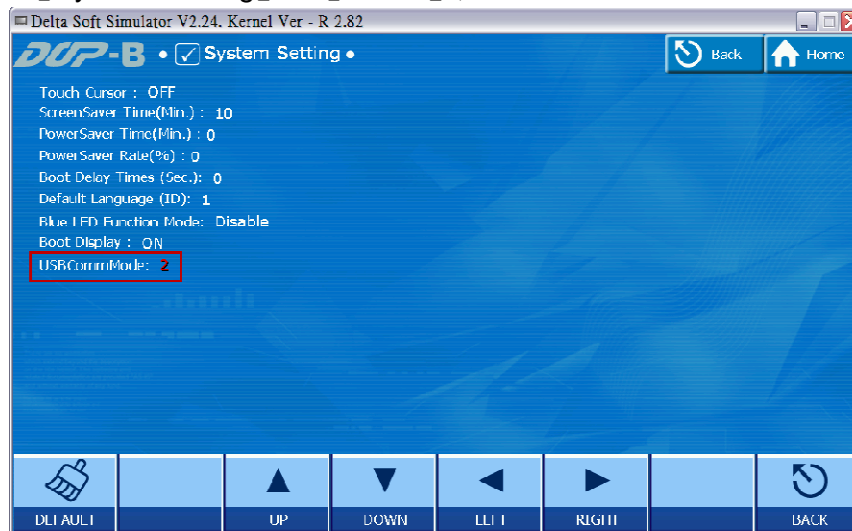
QUALITY
RELIABILITY
EXCELLENT

1. Fixed when upload/download HMI through CDC mode will cause error message “ No Response From HMI! ”.

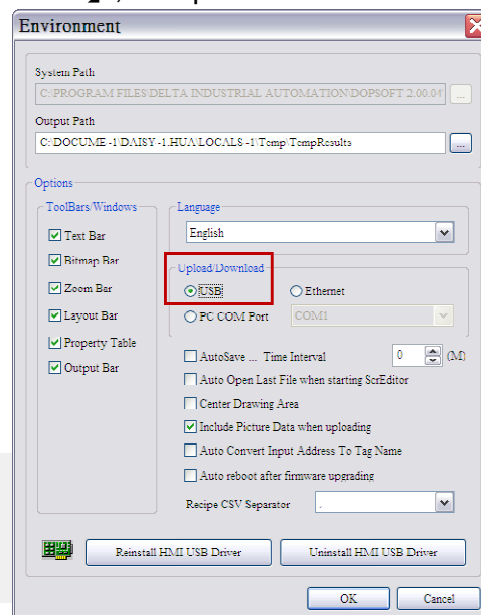
Step 1. Into **【Options】** → **【Configuration】** → **【Others】** , set USB Download to CDC.



Or Into System Menu **【System Setting】** → **【MISC.】** ,set USBCommMode to 2.



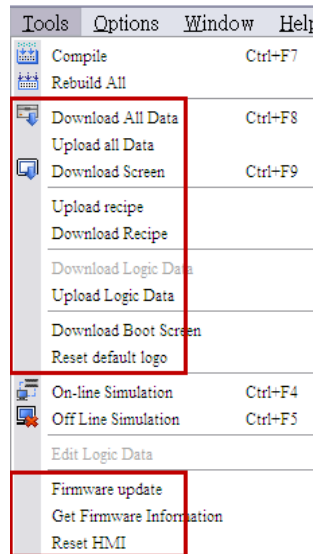
Step 2. Into **【Options】** → **【Environment】** ,set Upload/Download to USB.



品質至上
信賴第一
追求卓越

QUALITY
RELIABILITY
EXCELLENT

Step 3. Execute Download/Upload function from DopSoft: 【Download All Data】 , 【Upload all Data】 , 【Download Screen】 , 【Upload Recipe】 , 【Download Recipe】 , 【Download Logic Data】 , 【Upload Logic Data】 , 【Download Boot Screen】 , 【Reset default logo】 , 【Firmware update】 , 【Get Firmware Information】 , 【Reset HMI】 .



Before :

DopSoft will pop up error message “ No Response From HMI! ”.

After :

DopSoft will execute Download/Upload.

2. Fixed compile will show wrong error message when address of Alarm Setting is not specified.

Step 1. Create an Alarm History Table at screen, and doesn't specified address for Alarm Setting.

Step 2. Execute 【Tools】 → 【Rebuild All】 .

Before :

Output window will show incorrect message “Memory not enough in Panel SDRAM!” after compile.

After :

Output window will show correct message “Using alarm element must enable alarm function”.

3. Add DOP-H series HMI model: DOP-H07E460, DOP-H07S460, DOP-H07E420 and DOP-H07S420.
Add DOP-H series model menu.

The screenshot shows the 'Project Wizard' dialog box. On the left, the 'Series' dropdown menu is open, with 'DOP-H series' selected and highlighted by a red box. The 'HMI List' table on the right contains the following data:

| Model Type | Resolution | Color |
|------------|------------|--------------|
| H07E460 | 800 * 480 | 65536 Colors |
| H07S460 | 800 * 480 | 65536 Colors |
| H07E420 | 800 * 480 | 65536 Colors |
| H07S420 | 800 * 480 | 65536 Colors |

The 'Project Setup' section at the bottom contains the following fields:

- Project Name: NewHMI
- Screen Name: Screen_1
- Screen No: 1
- Printer: NULL
- System Message Language: Traditional Chinese
- HMI Rotation: 0 degree

At the bottom of the dialog, there are four buttons: 'Back', 'Next', 'Cancel', and 'Finish'.